

DALI and 0-10 V controls

DALI; 0-10 V controls ASD



CBU-A2D
Part no. 801590

Lighting control for mains voltage with 2 signal outputs with DALI + relay / 2 x 0-10 V to control up to two LED control gear.

CBU-ASD
Part no. 808685 (IP65)
Part no. 800685 (built-in)
Part no. 800665 (class II housing)

CASAMBI interface for mains voltage with configurable signal output DALI or 0-10 V.



0-10 V controls

CBU-ASR
Part no. 801580

Configurable lighting control for extra low voltage with 2x 0-10 V and additional relays out and sensor input.

Interface DALI to CASAMBI

CBU-DCS
Part no. 801570

Passive DALI interface to integrate CASAMBI networks to a DALI bus.



0-10 V multiple control

Part no. 808830

Simultaneously controlling of several 0-10 V power supplies.
Samples on request.



DALI multiple control

Part no. 808894 (25 participants)
Part no. 808893 (50 participants)

CASAMBI interface with IP protection with DALI-signal output, four groups.



Mains dimmer

Phase cut on the trailing edge



CBU-TED
max. 150 W
Art. 800680 (class II housing)
Art. 800698 (built-in)
Art. 808698 (IP65)



to control illuminants and control gears.

Phase cut on the leading and trailing edge

With adaptive dimming and load display

CASAMBI dimmer
max. 300 W
Part no. 808945

LED dimmer built in flush-mounted box.



CASAMBI dimmer
max. 380 W
Part no. 808946

Independent LED dimmer.



PWM dimmer



CASAMBI LED dimmer
max. 422 W
Part no. 808948

LED-Dimmer for extra low voltage for 1..4 channels, TW and RGB+W.

CBU-PWM4
max. 144 W
Part no. 808885 (IP65)
Part no. 800385

4 channel dimmer for extra-low voltage, configurable, for multiple LED circuits or for colour mixing.



PWM5 dimmer RGB+TW
max. 192 W
Part no. 808835

5 channel dimmer for extra-low voltage, configurable, for multiple LED circuits or for color mixing.

PWM2 dimmer
max. 120 W
Part no. 808834

2 channel dimmer for extra-low voltage, configurable.
Extra small design (65 x 29 x 14 mm).



DMX controls



Interface for DMX luminaires
Part no. 808828

Interface for up to 8 channels with DMX-512 output, with relay output and a sensor input.

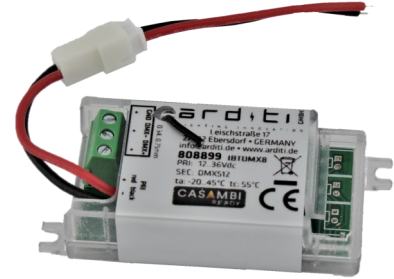


DMX interface
Part no. 808827

4-channel interface from the DMX controller to the CASAMBI network.

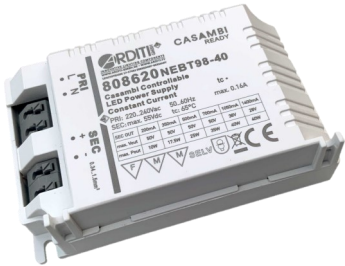
Interface for DMX luminaires
Part no. 808899

Interface for up to 8 channels with DMX-512 signal.
Extra small design (65 x 29 x 14 mm).



Power supplies

Konstantstrom

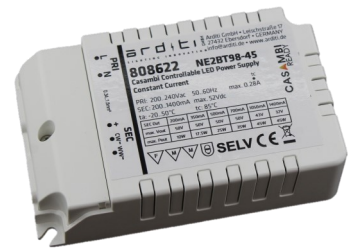


LED power supply, different currents max. 40 W
Part no. 808620

Controllable by integrated CASAMBI Interface, output current can be set from 200 mA - 1400 mA via app.
Small design (103 x 68 x 31 mm).

LED power supply, different currents, with terminal cover max. 45 W
Part no. 808622

Controllable by integrated CASAMBI Interface, output current can be set from 200 mA - 1400 mA via app.
Small design (110 x 68 x 31 mm).



Multifunktional



Multifunktional LED-plug power supply max. 18 W
Part no. 040645

with exchangeable plug attachments. Can be dimmed with a push button in the secondary circuit.

Constant voltage

LED power supply with external antenna (extendable) max. 160 W
Part no. 808631

Controllable by integrated CASAMBI Interface, PWM frequency can be set from 500 Hz - 4000 Hz.
Small design (198 x 62 x 39 mm).



Multifunktional LED power supply max. 18 W
Part no. 800578

Independent LED power supply, with different operation modes, controllable with the CASAMBI app.

Switches



Battery free wall switch
Part no. 808922 (2-way)
Part no. 808924 (4-way)

With 2 or 4 buttons, programmable, for CASAMBI devices. Works without mains connection or battery.

→ Also available as a conversion set in anthracite! (Attention: still require the remote insert / remote insert is not included)
part no. 808923
Part no. 808992 (2-way)
Part no. 808994 (4-way)



Xpress wall switch
Part no. 800671 (black)
Part no. 800672 (white)

Battery-operated radio switch to control CASAMBI devices, with 4 buttons (brighter - darker / warm white - cold white) and four programmable buttons.

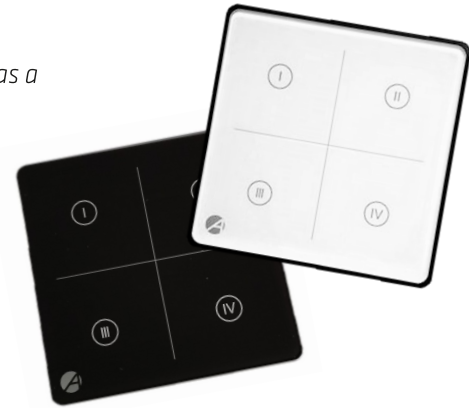


Wall switch glass, for mains voltage, in flush-mounted-box
Part no. 808846 (black)
Part no. 808847 (white)
Part no. 808848 (grey)

→ Also available for battery, as a remote control!
Part no. 808856 (black)
Part no. 808857 (white)
Part no. 808858 (grey)

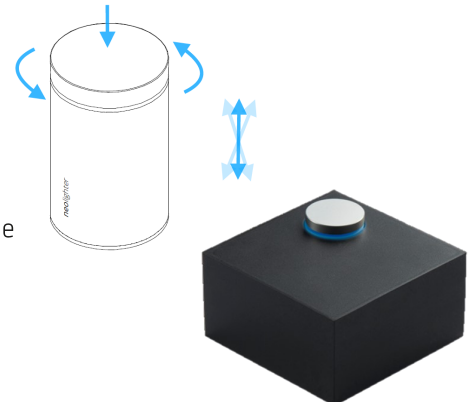


To control CASAMBI devices with 4 buttons, free programmable (luminaires, groups, on / off, scenes,...).



Design remote control
Part no. 808799 (black)
Part no. 808800 (white)

To control of CASAMBI devices (3+1 programmable functions). Matching: silicone housing "Aria Brick" Part no. 808790 (also available in other designs). *Small design* (Ø 29 x 49,5 mm).



Switches



Design remote control 4-way
Part no. 808897 (textured)
Part no. 808898 (plain)

Remote control with up to 4 free programmable functions (groups, on / off, scenes,...), Works without battery. *Small design (120 x 52 x 19/20 mm).*

Remote control 8-way
Part no. 808925

Remote control with up to 8 free programmable functions (groups, on / off, scenes,...). Works without battery.



Push button interface for 4 buttons



Push button interface
Part no. 808929

Radio switch for control of CASAMBI-devices, 4 push button inputs freely programmable, for mounting in a flush-mounted box.

Mini push button interface
Part no. 808921

Radio switch for control of CASAMBI-devices, 4 push button inputs freely programmable. *Extra small size (45 x 29 x 17 mm).*



 **Please note:**
The ASD can be used as an interface for a push button. Profile: Push dimmer button will be connected with DALI output.

E27 CASAMBI lampholder

Cap with key hole

Plain outer shell lampholder part no. 800162
Threaded outer shell lampholder part no. 800163
Partly threaded outer shell lampholder part no. 800164

Controllable E27 lampholder, with integrated CASAMBI dimmer.



Cap with threaded hole

Plain outer shell lampholder part no. 800165
Threaded outer shell lampholder part no. 800166
Partly threaded outer shell lampholder part no. 800167

Controllable E27 lampholder, with integrated CASAMBI dimmer.



Sensors

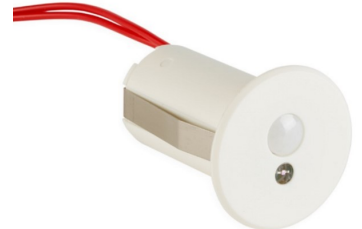


Motion and daylight sensor
 Part no. 808930 (white)
 Part no. 808931 (grey)
 Part no. 808932 (black)

For 230 V as a built-in with a range of max. 5 m.

Motion and daylight sensor
 Part no. 808933 (white)
 Part no. 808934 (grey)
 Part no. 808935 (black)

For 12-24 V as a built-in with a range of max. 5 m.



Motion and daylight sensor
 Part no. 808895

For 230 V as a built-in with a range of max. 3 m.

Vibration sensor
 Part no. 808974 (black)
 Part no. 808973 (light grey)

Battery-powered surfaced-mounted vibration sensor, sends a radio signal if it is shaken, sensitivity can be adjusted.



Motion and daylight sensor
 Part no. 808892 (black)
 Part no. 808890 (white)
 Part no. 808891 (grey)

With battery as a built-in inside CASAMBI networks.

Magnetic sensor
 Part no. 808724 (black)
 Part no. 808723 (light grey)

Battery-powered surface-mounted magnetic sensor, sends a radio signal in the event of contact or loss of contact with a magnet, battery and magnet included.



Motion and daylight sensor „Motion Paul“
 Part no. 808881 (white)
 Part no. 808882 (black)
 Part no. 808883 (transparent)
 Part no. 808884 (grey)

With PIR technology and threshold setting for the ambient brightness. Range of max. 14 m, 70° horizontal, 128 zones.

Please note:
 The ASD can be connected with a commercially available motion detector. The profile sensor output of the sensors will be connected with the 230 V input of the ASD.



Accessories



CASAMBI gateway for remote access
Part no. 808941

For controlling up to 2 CASAMBI networks, with remote access via Ethernet or Wifi. The gateway can be used for remote diagnostics, network monitoring or remote control!



Switching relay
10 A / 230 Vac
Part no. 808940

1 normally open contact, with screw terminals.

Electronic switching relay
10 A / 230 Vac
Part no. 808942

1 changeover contact, with screw terminals.



CASAMBI interface for DIN-rail
Part no. 808947

Interface with 4 inputs and outputs each for direct controlling of a bus system (KNX, Lutron, Crestron, Control 4), relays, shutter controls, single and multichannel D-PWM ballast control.

DT8 LED dimmer
max. 120 W/ channel
Part no. 808660

4-channel DALI² DT8 LED dimmer for LEDs for constant voltage, suitable for control by CASAMBI interfaces in DT8 mode.



DIN-rail adapter
Part no. 808975 (75 x 45 mm)
Part no. 808977 (40 x 45 mm)

Made of aluminum, with spring and adhesive pad, available in 2 sizes.

Installation box for CASAMBI actuators
Part no. 800659

With strain relief and terminal block.



Pole box for an individual assembly
Art.Nr. 808778 (grey)
Art.Nr. 808779 (black)

Box for a mounting on lamps and pole, incl. two IP65 plugs for cable (5 - 13,5 mm) with mounting bracket. Individual customization is possible on request, please ask for needed samples.



Accessories



CASAMBI gateway for remote access
Part no. 808941

For controlling up to 2 CASAMBI networks, with remote access via Ethernet or Wifi. The gateway can be used for remote diagnostics, network monitoring or remote control!



Switching relay
10 A / 230 Vac
Part no. 808940

1 normally open contact, with screw terminals.

Electronic switching relay
10 A / 230 Vac
Part no. 808942

1 changeover contact, with screw terminals.



CASAMBI interface for DIN-rail
Part no. 808947

Interface with 4 inputs and outputs each for direct controlling of a bus system (KNX, Lutron, Crestron, Control 4), relays, shutter controls, single and multichannel D-PWM ballast control.

DT8 LED dimmer
max. 120 W/ channel
Part no. 808660

4-channel DALI² DT8 LED dimmer for LEDs for constant voltage, suitable for control by CASAMBI interfaces in DT8 mode.



DIN-rail adapter
Part no. 808975 (75 x 45 mm)
Part no. 808977 (40 x 45 mm)

Made of aluminum, with spring and adhesive pad, available in 2 sizes.

Installation box for CASAMBI actuators
Part no. 800659

With strain relief and terminal block.



Voice control



Voice control „XMoment“
Part no. 808861 (4 command)
Part no. 808866 (16 commands)
Part no. 808771 (20 commands)

Works as a gateway between CASAMBI and Alexa and connects to your Alexa device via Wifi. The XMoment has a backup clock function. A remote access is possible.

Relay control

Blind control
Part no. 808939

Controller for electric blinds with integrated antenna and exchangeable fuse.



CASAMBI Controller for shutters and blinds
Part no. 808839


Controller for electric shutters and blinds, height and angle of slats continuously adjustable with button and slider.



Dual actuator, flush mounted
Part no. 808888

Potential free actuator with two independent relays, for loads especially with high inrush currents.



 Please note:
The ASD connected with a commercially available relay can also be used as an on/off-switch (profile switch on / off). At the 230 V output must be used a relay.

E27 bulb



Part no. 808880

LED light source for RGB + TW with integrated CASAMBI light control using a tablet or smart-phone with the CASAMBI app.

Part no. 808896

Available now:
E27 LED light source for TW with integrated CASAMBI light control!

Discover many other products on our website!